



**Government of Pakistan**  
Ministry of National Health Services,  
Regulations & Coordination



*“Universal Health Coverage (UHC) is an investment not just good for the individuals who directly benefit, but also worthy for their families, communities, country’ growth and political stability.”*



**Dr Faisal Sultan**  
*Special Assistant to Prime Minister/ Federal Minister of Health*

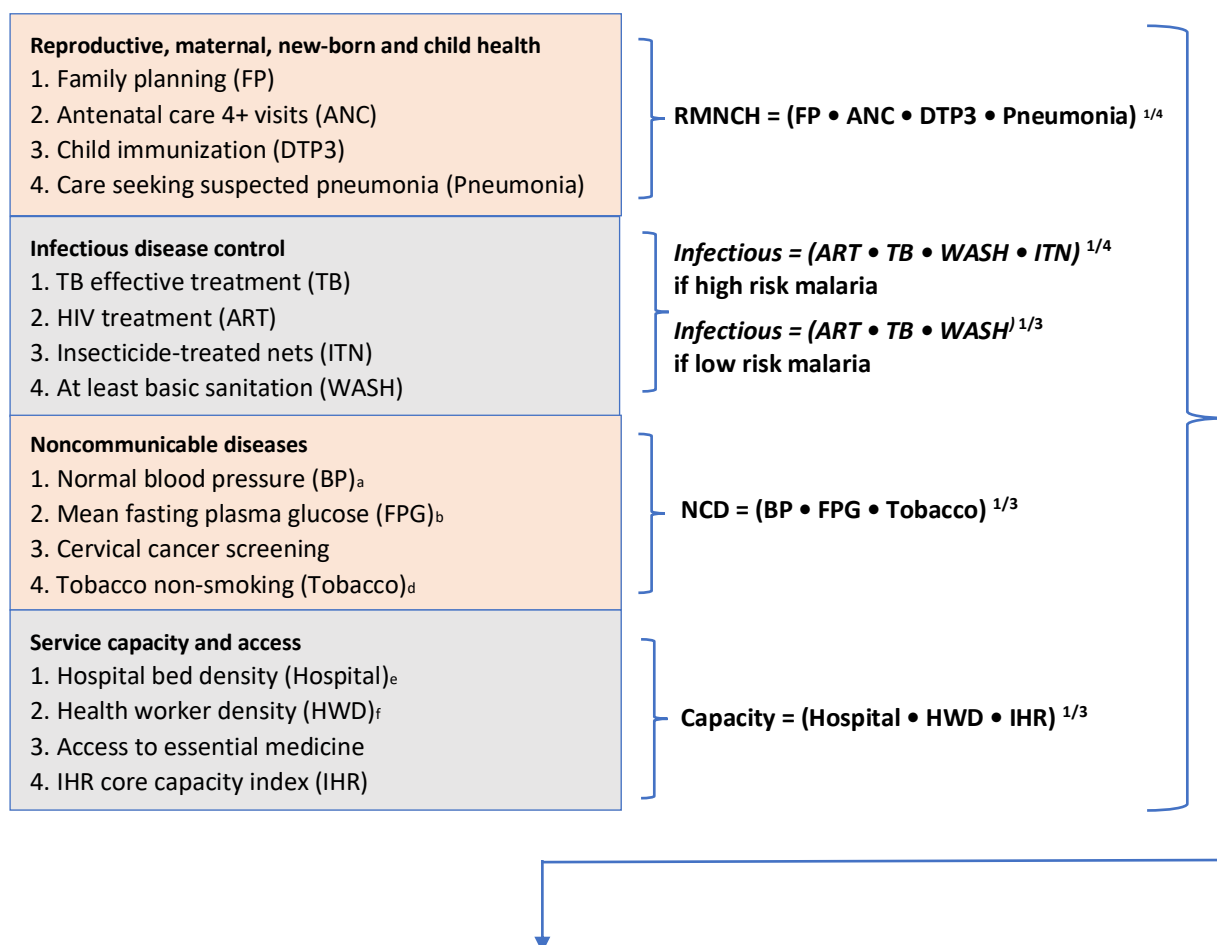
# UHC Service Coverage Index at District, Provincial & National Level



**MOVING TOGETHER**  
TO BUILD A HEALTHIER PAKISTAN

UNIVERSAL HEALTH COVERAGE

# UHC Service Coverage Index Calculation



$$UHC \text{ service coverage index} = (RMNCH \cdot Infectious \cdot NCD \cdot Capacity)^{1/4}$$

- a. The percentage of the adult population with **normal blood pressure** is based on age-standardized estimates. These distributions are rescaled to provide finer resolution for the index, based on the observed minima across countries. The rescaled indicator =  $(X-50)/(100-50) \cdot 100$ , where X is the prevalence of normal blood pressure.
- b. **Mean fasting plasma glucose (FPG)** is not measured on a scale bounded between 0 and 100%. To account for this range, estimates of national mean FPG were rescaled using a minimum of 5.1 mmol/L (the midpoint of minimum theoretical risk) and a maximum of 7.1 mmol/L (the maximum across national means). The rescaled indicator for mean FPG =  $(7.1-X)/(7.1-5.1)$ , where X is mean FPG.
- c. **Cervical cancer screening** and access to essential medicines are excluded due to low data availability.
- d. As in (a), **tobacco non-smoking** is also based on age-standardized estimates, and is rescaled to provide finer resolution based on a minimum bound of 50%, so that the rescaled indicator =  $(X-50)/(100-50) \cdot 100$ , where X is prevalence of tobacco non-smoking.
- e. **Hospital bed density** values were rescaled and capped based on a threshold of 18 per 10 000, based on minimum rates observed in high income OECD countries. Values below 18 per 10 000 are rescaled as  $X/18 \cdot 100$ , where X is hospital beds per 10 000, and values above 18 per 10 000 are set to 100.
- f. as in (e), **health worker density (HWD)** is rescaled and capped based on threshold values. Physician density has a threshold of 0.9 per 1000, psychiatrists have a threshold of 1 per 100 000, and surgeons have a threshold of 14 per 100 000. After rescaling these values (i.e., minimum  $(100, X/\text{threshold} \cdot 100)$ , where X is the cadre-specific density, they are combined into a HWD composite variable for entry into the above index calculations, computed as  $(\text{physicians} \cdot \text{psychiatrists} \cdot \text{surgeons})^{1/3}$ .

## National and Provincial/Federating Area UHC Service Coverage Index from 2015 to 2020:

<b>Year wise UHC Index</b>						
Province/Area	2015	2016	2017	2018	2019	2020
Islamabad (ICT)	44.7	47.7	48.9	48.5	51.3	56.0
Punjab	40.6	42.8	45.6	47.3	48.2	52.0
Khyber Pakhtunkhwa (KP)	36.2	40.7	45.8	47.3	47.6	50.3
Azad Jammu & Kashmir (AJK)	39.0	40.7	43.6	46.2	47.9	49.8
Sindh	37.6	40.6	43.9	45.0	46.7	48.6
Gilgit Baltistan (GB)	35.8	39.3	41.0	42.6	43.5	45.2
Balochistan	27.1	29.3	32.3	33.5	35.0	35.2
<b>National</b>	<b>39.7</b>	<b>42.1</b>	<b>45.3</b>	<b>46.3</b>	<b>47.1</b>	<b>49.9</b>

## Detailed breakdown of the UHC Index at provincial/federating area level for 2020:

UHC Indicators	Punjab	Sindh	KP	Balochistan	ICT	GB	AJK	National
1. Family Planning demand satisfied with modern methods (%)	50.3	50.2	45.1	33.8	55.1	46.4	38.5	48.6
2. Antenatal care -4+ visits	56.2	54.1	44.6	23.1	80.2	34.9	46.5	51.4
3. Child immunization (Penta 3) (%)	94.9	73.2	74.3	42.2	86.3	82.2	95.4	83.5
4. Care-seeking behaviour for child pneumonia (%)	86.1	85.4	84.3	62.2	83.6	76.3	80.8	84.2
<b>RMNCH Aggregate Score</b>	<b>69.33</b>	<b>64.19</b>	<b>59.58</b>	<b>37.84</b>	<b>75.14</b>	<b>56.45</b>	<b>60.95</b>	<b>64.74</b>
5. Tuberculosis effective treatment (%)	46.3	43.5	38.2	22.5	12.6	49.7	32.9	42.0
6. HIV treatment (%)	12.5	10.5	22.7	17.1	12.5	12.5	12.5	12.0
7. Insecticide-treated nets for malaria prevention (%) **	NA	NA	NA	NA	NA	NA	NA	NA
8. At least basic sanitation (%)	89.0	76.0	84.0	44.0	99.0	83.0	83.0	83.0
<b>CD Aggregate Score</b>	<b>37.24</b>	<b>32.58</b>	<b>41.77</b>	<b>25.66</b>	<b>25.01</b>	<b>37.25</b>	<b>32.47</b>	<b>34.71</b>
9. Normal blood pressure (%)	69.0	69.0	69.0	69.0	69.0	69.0	69.0	69.0
10. Normal mean plasma blood sugar (%)	39.0	39.0	39.0	39.0	39.0	39.0	39.0	39.0
11. Cervical cancer screening among women 30-49 years (%) **	NA	NA	NA	NA	NA	NA	NA	NA
12. Tobacco non-smoking (%)	59.0	59.0	59.0	59.0	59.0	59.0	59.0	59.0
<b>NCD Aggregate Score</b>	<b>54.15</b>	<b>54.15</b>	<b>54.15</b>	<b>54.15</b>	<b>54.15</b>	<b>54.15</b>	<b>54.15</b>	<b>54.15</b>
13. Hospital beds per 10,000 population against threshold (%)	53.7	39.3	49.2	25.0	161.4	36.7	74.8	49.4
14. (Physicians*Psychiatrist*Surgeon) density against threshold (%)	47.4	61.3	45.7	31.1	82.7	33.3	44.9	50.6
15. Availability of essential medicines in PHC (%) **	NA	NA	NA	NA	NA	NA	NA	NA
16. International Health Regulations core capacity index (%)	56.9	49.8	48.8	32.7	68.0	40.7	57.1	53.0
<b>SAC Aggregate Score</b>	<b>52.51</b>	<b>49.32</b>	<b>47.85</b>	<b>29.40</b>	<b>96.80</b>	<b>36.76</b>	<b>57.69</b>	<b>50.98</b>
<b>UHC Index</b>	<b>52.05</b>	<b>48.61</b>	<b>50.39</b>	<b>35.26</b>	<b>56.02</b>	<b>45.23</b>	<b>49.85</b>	<b>49.91</b>

## UHC Service Coverage Index at District Level (2020)

District/ Province/ Area	Population	National UHC Index Ranking	Provincial UHC Index Ranking	FP demand satisfied with modern method (%)	ANC – 4+ visits (%)	Child immunization (Penta 3) (%)	Care-seeking behavior for child pneumonia (%)	RMNCH Score	TB effective treatment (%)	HIV treatment (%)	Insecticide-treated nets for malaria prevention (%)	At least basic sanitation (%)	Infectious Diseases Score
Attock	1,988,694	49	24	46.40	60.30	92.30	78.30	67.06	26.43	12.54	NA	96.40	31.73
Bakhar	1,757,645	66	30	57.90	34.30	92.40	67.80	59.39	41.61	12.54	NA	60.60	31.62
Bhawalnagar	3,139,369	29	14	66.70	40.30	92.90	69.40	64.52	46.39	12.54	NA	75.50	35.28
Bhawalpur	3,883,944	73	34	68.40	35.50	96.50	69.60	63.55	62.09	12.54	NA	82.80	40.10
Chakwal	1,564,746	41	19	54.10	72.20	93.50	78.40	73.15	20.28	12.54	NA	97.30	29.14
Chinot	1,438,314	65	29	52.70	48.80	92.60	58.10	60.99	49.69	12.54	NA	68.40	34.93
Dera Ghazi Khan	3,104,851	68	32	46.40	36.30	97.80	77.40	59.76	71.19	12.54	NA	74.90	40.59
Faisalabad	8,291,823	11	5	63.50	64.70	90.70	82.70	74.51	44.62	12.54	NA	93.40	37.39
Gujaranwala	5,292,706	15	9	34.80	58.70	97.60	79.60	63.12	63.48	12.54	NA	99.10	42.89
Gujrat	2,872,282	14	8	53.20	70.00	98.00	86.80	75.02	28.34	12.54	NA	98.60	32.72
Hafizabad	1,211,085	34	17	46.20	43.00	98.80	87.60	64.39	55.20	12.54	NA	92.40	39.99
Jhang	2,894,291	61	28	46.50	42.80	98.70	62.10	59.10	54.63	12.54	NA	73.80	36.98
Jhelum	1,268,868	9	3	55.80	81.30	98.50	86.80	78.92	52.09	12.54	NA	96.20	39.76
Kasur	3,644,057	42	20	62.20	42.30	98.70	62.60	63.50	48.16	12.54	NA	96.20	38.73
Khanewal	3,065,874	54	27	63.30	45.30	97.50	80.40	68.86	47.24	12.54	NA	86.40	37.13
Khushab	1,344,745	28	13	50.70	38.70	99.70	77.70	62.44	63.21	12.54	NA	83.40	40.43
Lahore	12,033,729	2	1	60.50	75.40	84.40	90.30	76.79	42.01	12.54	NA	99.23	37.39
Layyah	1,952,218	45	22	65.80	44.50	96.50	78.20	68.56	32.36	12.54	NA	84.70	32.52
Lodhran	1,790,882	52	26	63.30	36.50	97.60	76.20	64.38	39.69	12.54	NA	91.80	35.75
Mandi bahauddin	1,665,225	19	10	39.90	58.60	99.70	88.20	67.34	75.46	12.54	NA	91.10	44.18
Mianwali	1,630,274	50	25	48.80	53.60	99.70	71.60	65.74	40.11	12.54	NA	81.30	34.45
Multan	5,030,849	10	4	71.10	56.80	98.50	77.80	74.59	52.51	12.54	NA	91.20	39.16
Muzafargarh	4,630,032	81	35	48.10	37.50	98.30	65.30	58.33	43.57	12.54	NA	72.90	34.15
Nankana Sahib	1,406,543	33	16	53.60	63.10	99.70	69.80	69.65	41.55	12.54	NA	98.70	37.19
Narawal	1,782,755	25	12	47.60	60.60	99.20	83.60	69.94	39.42	12.54	NA	96.20	36.23
Okara Distrct	3,172,206	43	21	56.60	46.70	99.70	63.60	63.98	47.09	12.54	NA	95.90	38.40
Pakpattan	1,914,489	69	33	60.20	38.30	99.00	64.50	61.94	45.11	12.54	NA	86.80	36.62
Rahim Yar Khan	5,109,198	67	31	63.40	30.80	92.90	80.80	61.88	37.65	12.54	NA	78.60	33.36
Rajanpur	2,167,668	91	36	46.00	27.20	98.60	66.30	53.48	46.12	12.54	NA	69.10	34.19
Rawalpindi	5,774,416	5	2	55.80	75.30	92.90	82.70	75.38	42.60	12.54	NA	97.40	37.33
Sahiwal	2,629,162	24	11	68.90	59.30	99.40	63.00	71.12	40.17	12.54	NA	94.50	36.24
Sargodha	3,876,858	12	6	54.80	49.30	99.50	81.90	68.50	63.38	12.54	NA	87.00	41.04
Sheikhupura	3,667,852	36	18	52.00	62.00	83.50	87.10	69.59	35.48	12.54	NA	99.00	35.32
Sialkot	4,091,800	13	7	49.60	63.40	96.90	83.60	71.04	32.45	12.54	NA	98.90	34.27
Toba Tek Singh	2,283,518	32	15	58.60	51.50	98.10	83.00	70.41	46.58	12.54	NA	90.90	37.58
Vehari	3,032,211	47	23	67.80	44.80	93.00	92.20	71.44	48.68	12.54	NA	66.30	34.33
<b>Punjab</b>	<b>116,334,523</b>			<b>50.30</b>	<b>56.20</b>	<b>94.90</b>	<b>86.10</b>	<b>69.33</b>	<b>46.26</b>	<b>12.54</b>	<b>NA</b>	<b>89.00</b>	<b>37.24</b>
Badin	1,933,630	107	24	64.20	19.20	82.50	42.80	45.68	45.97	10.45	NA	41.60	27.14
Dadu	1,626,083	84	15	34.00	29.40	81.70	77.70	50.19	44.75	10.45	NA	74.40	32.64
Ghotki	1,774,330	90	17	43.50	42.60	64.90	73.70	54.56	34.55	10.45	NA	63.80	28.45
Hyderabad	2,322,939	6	2	62.30	67.40	77.00	64.90	67.68	61.45	10.45	NA	90.00	38.66
Jacobabad	1,053,557	86	16	51.70	28.60	45.50	83.40	48.67	45.05	10.45	NA	79.40	33.44
Jamshoro	1,071,208	71	11	41.90	26.00	75.20	49.90	44.97	97.95	10.45	NA	70.40	41.61
K. Shadad Kot	1,413,338	106	23	35.00	38.50	58.70	59.90	46.66	35.82	10.45	NA	78.70	30.88
Karachi Central	3,085,716	8	3	50.30	89.90	84.10	90.60	76.61	41.91	10.45	NA	98.40	35.06
Karachi East	3,201,412	31	6	41.40	64.80	78.60	76.60	63.40	28.47	10.45	NA	99.80	30.97
Karachi South	1,841,342	1	1	46.40	82.30	86.60	78.10	71.29	61.96	10.45	NA	99.60	40.10
Karachi West	4,278,071	64	9	39.30	66.10	72.40	58.30	57.54	21.52	10.45	NA	98.40	28.08
Kashmor	1,164,954	121	28	15.90	7.50	26.00	94.40	23.26	32.15	10.45	NA	68.00	28.37

Normal blood pressure	Normal blood sugar	Cervical cancer screening among women 30-49 years (%)	Tobacco non-smoking	Non-Communicable Diseases Score	Hospital beds per 10,000 population	(Physicians* Psychiatrist *Surgeon) density against threshold (%)	Availability of essential medicines in PHC (%)	International Health Regulations core capacity index (%)	Services Access & Capacity Score	UHC Index 2020	Provincial UHC Index Ranking	National UHC Index Ranking	District/ Province/Area
69.00	39.00	NA	59.00	54.15	35.03	50.98	NA	61.17	47.80	48.44	24	49	Attock
69.00	39.00	NA	59.00	54.15	49.37	40.73	NA	48.88	46.15	46.54	30	66	Bakhar
69.00	39.00	NA	59.00	54.15	70.57	40.86	NA	49.03	52.10	50.34	14	29	Bhawalnagar
69.00	39.00	NA	59.00	54.15	13.92	41.83	NA	50.20	30.80	45.41	34	73	Bhawalpur
69.00	39.00	NA	59.00	54.15	39.80	51.37	NA	61.64	50.14	49.05	19	41	Chakwal
69.00	39.00	NA	59.00	54.15	30.94	42.61	NA	51.13	40.70	46.55	29	65	Chinot
69.00	39.00	NA	59.00	54.15	28.79	34.70	NA	41.64	34.65	46.19	32	68	Dera Ghazi Khan
69.00	39.00	NA	59.00	54.15	65.73	50.72	NA	60.86	58.76	54.56	5	11	Faisalabad
69.00	39.00	NA	59.00	54.15	48.06	49.88	NA	59.85	52.35	52.63	9	15	Gujranwala
69.00	39.00	NA	59.00	54.15	61.31	51.56	NA	61.87	58.05	52.71	8	14	Gujrat
69.00	39.00	NA	59.00	54.15	33.81	45.73	NA	54.87	43.94	49.75	17	34	Hafizabad
69.00	39.00	NA	59.00	54.15	30.54	44.23	NA	53.08	41.54	47.09	28	61	Jhang
69.00	39.00	NA	59.00	54.15	46.10	53.77	NA	64.52	54.28	55.11	3	9	Jhelum
69.00	39.00	NA	59.00	54.15	31.56	46.31	NA	55.57	43.30	49.00	20	42	Kasur
69.00	39.00	NA	59.00	54.15	22.02	45.34	NA	54.40	37.87	47.85	27	54	Khanewal
69.00	39.00	NA	59.00	54.15	41.60	45.79	NA	54.95	47.13	50.38	13	28	Khushab
69.00	39.00	NA	59.00	54.15	135.01	56.88	NA	68.25	80.63	59.50	1	2	Lahore
69.00	39.00	NA	59.00	54.15	37.62	47.28	NA	56.74	46.56	48.69	22	45	Layyah
69.00	39.00	NA	59.00	54.15	34.90	42.74	NA	51.29	42.45	47.96	26	52	Lodhran
69.00	39.00	NA	59.00	54.15	33.06	46.44	NA	55.72	44.06	51.62	10	19	M. Bahauddin
69.00	39.00	NA	59.00	54.15	40.72	41.83	NA	50.20	44.06	48.21	25	50	Mianwali
69.00	39.00	NA	59.00	54.15	75.04	46.57	NA	55.88	58.02	55.04	4	10	Multan
69.00	39.00	NA	59.00	54.15	20.52	37.88	NA	45.45	32.81	43.37	35	81	Muzaffargarh
69.00	39.00	NA	59.00	54.15	30.89	48.00	NA	57.59	44.03	49.85	16	33	Nankana Sahib
69.00	39.00	NA	59.00	54.15	38.33	48.51	NA	58.21	47.66	50.57	12	25	Narowal
69.00	39.00	NA	59.00	54.15	31.10	45.73	NA	54.87	42.73	48.83	21	43	Okara Distrct
69.00	39.00	NA	59.00	54.15	22.37	42.81	NA	51.37	36.64	46.06	33	69	Pakpattan
69.00	39.00	NA	59.00	54.15	34.98	40.54	NA	48.64	41.01	46.27	31	67	Rahim Yar Khan
69.00	39.00	NA	59.00	54.15	19.32	32.82	NA	39.38	29.23	41.25	36	91	Rajanpur
69.00	39.00	NA	59.00	54.15	81.77	56.49	NA	67.79	67.91	56.72	2	5	Rawalpindi
69.00	39.00	NA	59.00	54.15	42.66	46.05	NA	55.26	47.70	50.80	11	24	Sahiwal
69.00	39.00	NA	59.00	54.15	67.68	47.22	NA	56.66	56.57	54.17	6	12	Sargodha
69.00	39.00	NA	59.00	54.15	33.75	47.87	NA	57.44	45.27	49.54	18	36	Sheikhupura
69.00	39.00	NA	59.00	54.15	63.12	54.09	NA	64.91	60.52	53.15	7	13	Sialkot
69.00	39.00	NA	59.00	54.15	28.59	49.49	NA	59.38	43.80	50.05	15	32	Toba Tek Singh
69.00	39.00	NA	59.00	54.15	34.06	42.48	NA	50.98	41.94	48.58	23	47	Vehari
<b>69.00</b>	<b>39.00</b>	NA	59.00	<b>54.15</b>	<b>53.72</b>	<b>47.36</b>	NA	<b>56.90</b>	<b>52.51</b>	<b>52.05</b>			<b>Punjab</b>
69.00	39.00	NA	59.00	54.15	14.19	39.51	NA	32.06	26.20	36.41	24	107	Badin
69.00	39.00	NA	59.00	54.15	16.84	60.61	NA	49.19	36.89	42.53	15	84	Dadu
69.00	39.00	NA	59.00	54.15	22.42	49.30	NA	40.00	35.36	41.52	17	90	Ghotki
69.00	39.00	NA	59.00	54.15	96.41	68.67	NA	55.72	71.72	56.46	2	6	Hyderabad
69.00	39.00	NA	59.00	54.15	32.32	42.20	NA	34.24	36.01	42.21	16	86	Jacobabad
69.00	39.00	NA	59.00	54.15	31.95	54.86	NA	44.52	42.73	45.61	11	71	Jamshoro
69.00	39.00	NA	59.00	54.15	10.77	43.73	NA	35.49	25.57	37.58	23	106	K Shadad Kot
69.00	39.00	NA	59.00	54.15	52.45	81.91	NA	66.46	65.85	55.63	3	8	Karachi Central
69.00	39.00	NA	59.00	54.15	39.31	81.91	NA	66.46	59.81	50.21	6	31	Karachi East
69.00	39.00	NA	59.00	54.15	205.53	81.91	NA	66.46	103.81	63.31	1	1	Karachi South
69.00	39.00	NA	59.00	54.15	28.41	81.91	NA	66.46	53.68	46.55	9	64	Karachi West
69.00	39.00	NA	59.00	54.15	6.87	45.17	NA	36.66	22.49	29.94	28	121	Kashmor

## UHC Service Coverage Index at District Level (2020)

District/ Province/Area	Population	National UHC Index Ranking	Provincial UHC Index Ranking	FP demand satisfied with modern method (%)	ANC- 4+ visits (%)	Child immuni- zation (Penta 3) (%)	Care- seeking behavior for child pneumonia (%)	RMNCH Score	TB effective treatment (%)	HIV treatment (%)	Insecticide- treated nets for malaria prevention (%)	At least basic sanitation (%)	Infectious Diseases Score
Khairpur	2,558,804	75	12	49.70	44.90	84.50	69.10	60.08	48.57	10.45	NA	51.90	29.75
Korangi	2,619,698	55	7	44.70	78.60	84.00	76.60	68.95	39.73	10.45	NA	100.00	34.63
Larkana	1,617,633	20	4	52.60	44.70	72.40	59.90	56.51	56.40	10.45	NA	78.00	35.82
Malir	2,224,696	70	10	60.90	64.20	71.00	66.00	65.42	31.07	10.45	NA	97.60	31.64
Matiyari	818,993	83	14	46.60	52.90	70.60	70.60	59.21	36.70	10.45	NA	60.50	28.52
Mirpur Khas	1,614,470	96	20	32.60	28.40	78.20	74.70	48.22	55.28	10.45	NA	47.10	30.08
Naushero Feroz	1,704,690	76	13	42.40	42.90	72.20	77.70	56.52	42.04	10.45	NA	89.50	34.00
Sanghar	2,190,369	95	19	49.80	21.60	63.40	79.30	48.22	50.33	10.45	NA	52.30	30.19
S. Benazirabad	1,702,042	58	8	44.90	35.10	73.70	88.90	56.69	61.47	10.45	NA	56.90	33.19
Shikarpur	1,291,366	93	18	39.10	24.90	68.40	57.00	44.14	38.85	10.45	NA	58.30	28.71
Sujawal	829,797	116	27	31.70	29.80	36.90	59.10	37.89	33.74	10.45	NA	33.90	22.86
Sukkar	1,589,759	26	5	51.60	54.10	63.80	75.50	60.56	63.46	10.45	NA	76.20	36.97
Tando Allahyar	901,724	98	21	38.10	44.20	77.30	63.80	53.68	24.80	10.45	NA	59.90	24.95
TM Khan	720,168	109	25	29.30	41.40	77.70	48.30	46.19	38.91	10.45	NA	48.90	27.09
Tharparkar	1,793,364	124	29	13.10	19.30	64.60	83.90	34.21	28.11	10.45	NA	21.10	18.37
Thatta	1,050,199	105	22	44.20	46.60	84.80	100.00	64.65	19.44	10.45	NA	50.20	21.69
Umer Kot	1,148,420	113	26	33.20	6.30	74.20	83.90	33.78	87.53	10.45	NA	33.00	31.14
<b>Sindh</b>	<b>51,056,575</b>			<b>50.20</b>	<b>54.10</b>	<b>73.20</b>	<b>85.40</b>	<b>64.19</b>	<b>43.53</b>	<b>10.45</b>	NA	<b>76.00</b>	<b>32.58</b>
Abbotabad	1,414,900	4	2	54.65	60.00	92.10	67.60	67.22	35.54	22.71	NA	96.20	42.66
Bajour District	1,194,014	92	22	49.55	26.30	64.30	69.50	49.13	16.25	22.71	NA	45.50	25.61
Bannu	1,310,521	62	14	44.02	26.30	52.30	69.50	45.29	48.47	22.71	NA	74.50	43.45
Batagram	507,698	78	18	36.27	27.70	53.90	53.80	41.31	47.71	22.71	NA	79.30	44.13
Buner	974,430	80	19	37.92	44.30	69.70	85.70	56.28	28.00	22.71	NA	67.00	34.93
Charsadda	1,726,696	72	16	47.83	39.10	76.70	59.60	54.07	22.98	22.71	NA	89.70	36.04
Chitral	469,795	23	6	48.40	48.20	96.50	47.20	57.10	34.24	22.71	NA	96.40	42.17
Dera Ismail Khan	1,861,115	88	21	35.62	17.30	61.00	65.60	39.63	35.54	22.71	NA	83.80	40.75
Hangu	557,543	53	12	42.66	47.70	53.80	71.70	52.93	57.66	22.71	NA	95.60	50.02
Haripur	1,058,163	18	4	52.57	50.10	94.20	65.50	63.49	23.83	22.71	NA	93.90	37.04
Karak	758,438	37	8	44.17	50.40	55.10	52.20	50.30	48.72	22.71	NA	92.10	46.71
Khyber District	1,074,649	108	26	15.51	46.30	73.00	70.10	43.78	27.05	22.71	NA	66.20	34.39
Kohat	1,207,407	40	9	46.68	46.30	76.00	70.10	58.25	42.41	22.71	NA	88.00	43.93
Kohistan	844,218	144	32	16.45	2.00	40.20	35.60	14.73	25.72	22.71	NA	61.40	32.98
Kurram District	649,043	112	27	15.51	46.30	65.00	70.10	42.53	14.49	22.71	NA	65.90	27.89
Lakki Marwat	981,408	85	20	41.44	16.60	32.30	51.90	32.77	55.87	22.71	NA	85.10	47.62
Lower Dir	1,586,913	63	15	43.09	59.30	80.40	45.30	55.23	26.84	22.71	NA	84.00	37.13
Malakand	770,160	21	5	49.55	42.30	84.70	59.30	56.96	41.34	22.71	NA	93.90	44.51
Mansehra	1,664,212	51	11	48.55	38.30	83.90	63.20	56.04	29.04	22.71	NA	90.90	39.14
Mardan	2,544,833	46	10	50.49	50.10	72.30	53.30	55.88	30.10	22.71	NA	90.80	39.59
Mohmand District	490,004	118	29	15.51	61.50	55.30	62.30	42.58	16.59	22.71	NA	32.20	22.98
North Waziristan	576,205	115	28	15.51	26.30	26.30	69.50	29.39	30.85	22.71	NA	56.60	34.10
Nowshera	1,644,204	30	7	50.06	62.80	86.20	60.50	63.63	28.09	22.71	NA	92.60	38.95
Orakzai District	258,843	100	24	15.51	46.30	59.10	70.10	41.53	49.53	22.71	NA	79.70	44.76
Peshawar	4,825,129	3	1	54.29	61.50	77.30	62.30	63.32	63.37	22.71	NA	94.60	51.44
Shangla	820,959	74	17	31.46	42.30	81.80	59.30	50.40	50.54	22.71	NA	72.60	43.68
S Waziristan	725,426	127	30	15.51	17.30	4.80	65.60	17.05	16.44	22.71	NA	50.20	26.57
Swabi	1,735,690	56	13	46.97	50.60	81.00	66.90	59.91	21.74	22.71	NA	94.20	35.96
Swat	2,520,770	16	3	44.38	57.80	92.40	57.50	60.76	38.56	22.71	NA	89.60	42.81
Tank	460,135	99	23	32.96	11.40	61.60	50.10	32.82	48.25	22.71	NA	74.50	43.38

Normal blood pressure	Normal blood sugar	Cervical cancer screening among women 30-49 years (%)	Tobacco non-smoking	Non-Communicable Diseases Score	Hospital beds per 10,000 population	(Physicians* Psychiatrist *Surgeon) density against threshold (%)	Availability of essential medicines in PHC (%)	International Health Regulation's core capacity index (%)	Services Access & Capacity Score	UHC Index 2020	Provincial UHC Index Ranking	National UHC Index Ranking	District/ Province/Area
69.00	39.00	NA	59.00	54.15	34.22	53.32	NA	43.27	42.90	45.14	12	75	Khairpur
69.00	39.00	NA	59.00	54.15	11.62	81.91	NA	66.46	39.85	47.64	7	55	Korangi
69.00	39.00	NA	59.00	54.15	85.58	59.27	NA	48.10	62.49	51.16	4	20	Larkana
69.00	39.00	NA	59.00	54.15	11.31	81.91	NA	66.46	39.49	45.87	10	70	Malir
69.00	39.00	NA	59.00	54.15	19.88	54.57	NA	44.28	36.35	42.70	14	83	Matiari
69.00	39.00	NA	59.00	54.15	24.81	41.24	NA	33.47	32.47	39.96	20	96	Mirpur Khas
69.00	39.00	NA	59.00	54.15	18.93	63.78	NA	51.75	39.69	45.08	13	76	Naushero Feroz
69.00	39.00	NA	59.00	54.15	22.98	47.09	NA	38.21	34.58	40.63	19	95	Sanghar
69.00	39.00	NA	59.00	54.15	50.20	54.86	NA	44.52	49.68	47.43	8	58	S. Benazirabad
69.00	39.00	NA	59.00	54.15	35.97	49.87	NA	40.47	41.71	41.13	18	93	Shikkarpur
69.00	39.00	NA	59.00	54.15	23.37	31.27	NA	25.37	26.46	33.38	27	116	Sujawal
69.00	39.00	NA	59.00	54.15	47.35	63.20	NA	51.29	53.54	50.47	5	26	Sukkar
69.00	39.00	NA	59.00	54.15	20.08	50.64	NA	41.09	34.70	39.83	21	98	Tando Allahyar
69.00	39.00	NA	59.00	54.15	13.27	36.16	NA	29.34	24.15	35.76	25	109	TM Khan
69.00	39.00	NA	59.00	54.15	15.89	21.77	NA	17.67	18.28	28.09	29	124	Tharparkar
69.00	39.00	NA	59.00	54.15	22.54	36.16	NA	29.34	28.81	38.46	22	105	Thatta
69.00	39.00	NA	59.00	54.15	16.93	30.88	NA	25.06	23.58	34.04	26	113	Umer Kot
69.00	39.00	NA	59.00	54.15	<b>39.28</b>	<b>61.33</b>	NA	<b>49.80</b>	<b>49.32</b>	<b>48.61</b>			<b>Sindh</b>
69.00	39.00	NA	59.00	54.15	126.98	55.57	NA	59.23	74.77	58.37	2	4	Abbotabad
69.00	39.00	NA	59.00	54.15	27.73	50.39	NA	53.70	42.18	41.17	22	92	Bajour District
69.00	39.00	NA	59.00	54.15	43.07	44.77	NA	47.71	45.14	46.83	14	62	Bannu
69.00	39.00	NA	59.00	54.15	33.48	36.88	NA	39.30	36.48	43.56	18	78	Batagram
69.00	39.00	NA	59.00	54.15	23.89	38.56	NA	41.09	33.58	43.48	19	80	Buner
69.00	39.00	NA	59.00	54.15	26.87	48.64	NA	51.83	40.76	45.54	16	72	Charsadda
69.00	39.00	NA	59.00	54.15	51.91	49.22	NA	52.46	51.18	50.82	6	23	Chitral
69.00	39.00	NA	59.00	54.15	32.18	36.22	NA	38.60	35.57	41.99	21	88	Dera Ismail Khan
69.00	39.00	NA	59.00	54.15	24.41	43.38	NA	46.23	36.58	47.86	12	53	Hangu
69.00	39.00	NA	59.00	54.15	62.37	53.46	NA	56.97	57.48	52.01	4	18	Haripur
69.00	39.00	NA	59.00	54.15	47.69	44.91	NA	47.86	46.80	49.40	8	37	Karak
69.00	39.00	NA	59.00	54.15	32.05	15.77	NA	16.81	20.41	35.91	26	108	Khyber District
69.00	39.00	NA	59.00	54.15	30.87	47.47	NA	50.59	42.01	49.12	9	40	Kohat
69.00	39.00	NA	59.00	54.15	2.37	16.72	NA	17.82	8.90	22.00	32	144	Kohistan
69.00	39.00	NA	59.00	54.15	38.35	15.77	NA	16.81	21.66	34.34	27	112	Kurram District
69.00	39.00	NA	59.00	54.15	30.40	42.14	NA	44.91	38.60	42.50	20	85	Lakki Marwat
69.00	39.00	NA	59.00	54.15	38.05	43.82	NA	46.70	42.70	46.66	15	63	Lower Dir
69.00	39.00	NA	59.00	54.15	44.15	50.39	NA	53.70	49.25	50.99	5	21	Malakand
69.00	39.00	NA	59.00	54.15	35.59	49.37	NA	52.61	45.21	48.14	11	51	Mansehra
69.00	39.00	NA	59.00	54.15	36.33	51.34	NA	54.71	46.73	48.64	10	46	Mardan
69.00	39.00	NA	59.00	54.15	26.08	15.77	NA	16.81	19.05	31.70	29	118	Mohmand District
69.00	39.00	NA	59.00	54.15	47.24	15.77	NA	16.81	23.23	33.50	28	115	North Waziristan
69.00	39.00	NA	59.00	54.15	38.99	50.90	NA	54.25	47.57	50.27	7	30	Nowshera
69.00	39.00	NA	59.00	54.15	53.66	15.77	NA	16.81	24.23	39.52	24	100	Orakzai District
69.00	39.00	NA	59.00	54.15	104.40	55.21	NA	58.84	69.73	59.22	1	3	Peshawar
69.00	39.00	NA	59.00	54.15	40.81	31.99	NA	34.09	35.43	45.34	17	74	Shangla
69.00	39.00	NA	59.00	54.15	38.06	15.77	NA	16.81	21.61	26.98	30	127	S Waziristan
69.00	39.00	NA	59.00	54.15	34.70	47.76	NA	50.90	43.85	47.56	13	56	Swabi
69.00	39.00	NA	59.00	54.15	66.16	45.13	NA	48.10	52.37	52.11	3	16	Swat
69.00	39.00	NA	59.00	54.15	27.53	33.52	NA	35.72	32.06	39.65	23	99	Tank

## UHC Service Coverage Index at District Level (2020)

District/ Province/Area	Population	National UHC Index Ranking	Provincial UHC Index Ranking	FP demand satisfied with modern method (%)	ANC – 4+ visits (%)	Child immun- ization (Penta 3) (%)	Care- seeking behavior for child pneumonia (%)	RMNCH Score	TB effective treatment (%)	HIV treatment (%)	Insecticide- treated nets for malaria prevention (%)	At least basic sanitation (%)	Infectious Diseases Score
Torghar	170,926	134	31	17.24	11.40	46.10	48.40	25.73	25.72	22.71	NA	51.50	31.10
Upper Dir	1,016,558	103	25	26.93	39.10	56.30	51.80	41.86	19.97	22.71	NA	88.40	34.23
<b>Khyber Pakhtunkhwa</b>	<b>38,338,040</b>			<b>45.10</b>	<b>44.60</b>	<b>74.30</b>	<b>84.30</b>	<b>59.58</b>	<b>38.20</b>	<b>22.71</b>	<b>NA</b>	<b>84.00</b>	<b>41.77</b>
Awaran	122,188	149	31	13.89	7.50	45.40	53.20	22.40	26.44	17.10	NA	2.52	10.45
Barkhan	184,695	150	32	19.03	2.20	52.90	39.40	17.19	7.16	17.10	NA	22.70	14.06
Chaghi	252,937	141	24	16.86	16.70	41.40	40.10	26.15	8.05	17.10	NA	12.20	11.89
Dera Bhugti	338,464	142	25	21.76	12.30	8.80	63.20	19.64	6.03	17.10	NA	24.00	13.53
Duki	252,176	122	8	30.59	2.20	29.90	39.40	16.78	13.97	17.10	NA	89.90	27.79
Gwadar	277,363	120	7	35.57	11.80	63.60	63.60	36.10	7.02	17.10	NA	62.10	19.54
Harnai	100,397	145	27	14.77	12.30	89.90	63.20	31.88	3.16	17.10	NA	12.30	8.72
Jaffarabad	558,127	110	2	27.70	11.40	52.60	84.30	34.40	54.82	17.10	NA	55.80	37.40
Jhal Magsi	156,041	135	18	14.69	11.40	15.80	84.30	21.73	117.91	17.10	NA	12.20	29.08
Kachhi	243,071	133	17	27.70	11.40	11.50	84.30	23.52	13.97	17.10	NA	13.80	14.88
Kalat	446,697	151	33	32.52	7.50	33.10	53.20	25.60	2.23	17.10	NA	1.64	3.97
Kech	1,020,162	125	10	33.56	11.80	62.50	63.60	35.42	9.07	17.10	NA	15.50	13.39
Kharan	167,429	138	21	23.28	7.50	78.00	53.20	29.18	18.15	17.10	NA	2.29	8.92
Khuzdar	882,507	148	30	33.08	7.50	16.80	53.20	21.70	13.44	17.10	NA	0.92	5.96
Killa Abdullah	844,220	137	20	19.11	16.70	57.60	40.10	29.30	18.29	17.10	NA	35.50	22.31
Killa Saifullah	372,682	136	19	33.88	2.20	25.20	39.40	16.49	48.54	17.10	NA	9.30	19.76
Kohlu	239,633	126	11	21.44	12.30	56.90	63.20	31.20	7.22	17.10	NA	94.20	22.66
Lasbela	627,538	117	5	33.40	7.50	48.20	53.20	28.31	23.15	17.10	NA	63.70	29.33
Lehri	123,100	123	9	35.40	12.30	21.40	63.20	27.70	4.66	17.10	NA	72.80	17.97
Loralai	425,176	119	6	30.59	2.20	26.90	39.40	16.34	38.53	17.10	NA	72.80	36.33
Musakhel	172,456	143	26	29.54	2.20	13.50	39.40	13.64	4.18	17.10	NA	72.80	17.33
Mustang	289,599	128	12	36.85	7.50	9.60	53.20	19.38	13.94	17.10	NA	29.60	19.18
Nasirabad	542,549	130	14	24.97	11.40	28.30	84.30	28.71	29.97	17.10	NA	54.10	30.27
Nushki	195,215	129	13	35.41	16.70	9.80	40.10	21.96	25.18	17.10	NA	7.02	14.46
Panjgur	330,654	131	15	35.56	11.80	68.80	63.60	36.81	7.34	17.10	NA	12.20	11.52
Pishin	812,165	114	4	38.70	16.70	55.40	40.10	34.61	27.01	17.10	NA	65.20	31.11
Quetta	2,664,439	77	1	53.31	16.70	43.10	40.10	35.22	30.95	17.10	NA	75.20	34.14
Sherani	167,809	140	23	23.68	2.20	22.70	39.40	14.69	16.14	17.10	NA	20.60	17.85
Sibi	140,951	111	3	35.41	12.30	21.40	63.20	27.70	33.75	17.10	NA	34.60	27.13
Sohbatput	211,020	139	22	24.96	11.40	63.10	84.30	35.08	8.02	17.10	NA	36.00	17.03
Washuk	188,726	147	29	15.09	7.50	86.60	53.20	26.87	11.22	17.10	NA	12.20	13.28
Zhob	332,791	132	16	23.68	2.20	28.80	39.40	15.59	49.62	17.10	NA	20.60	25.95
Ziarat	177,336	146	28	24.17	12.30	33.30	63.20	28.12	8.56	17.10	NA	5.23	9.15
<b>Balochistan</b>	<b>13,536,269</b>			<b>33.80</b>	<b>23.10</b>	<b>42.20</b>	<b>62.20</b>	<b>37.84</b>	<b>22.45</b>	<b>17.10</b>	<b>NA</b>	<b>44.00</b>	<b>25.66</b>
Bagh	396,427	17	1	38.50	38.70	96.30	72.30	56.75	60.29	12.54	NA	83.00	39.74
Bhimber	-	22	2	38.50	38.70	98.30	72.30	57.04	44.60	12.54	NA	83.00	35.94
Hattian Bala	245,720	27	3	38.50	38.70	91.00	72.30	55.95	42.22	12.54	NA	83.00	35.29
Haveli	251,816	35	4	38.50	38.70	92.20	72.30	56.14	34.47	12.54	NA	83.00	32.98
Kotli	914,878	39	6	38.50	38.70	97.20	72.30	56.88	30.23	12.54	NA	83.00	31.57
Mirpur	575,930	44	7	38.50	38.70	97.80	72.30	56.97	27.18	12.54	NA	83.00	30.47
Muzaffarabad	782,895	38	5	38.50	38.70	93.10	72.30	56.27	31.43	12.54	NA	83.00	31.98
Neelum	203,858	48	8	38.50	38.70	87.20	72.30	55.36	27.16	12.54	NA	83.00	30.46
Poonch	533,557	57	9	38.50	38.70	95.50	72.30	56.63	20.04	12.54	NA	83.00	27.53
Sudhnoti	406,861	59	10	38.50	38.70	98.00	72.30	57.00	18.82	12.54	NA	83.00	26.96
<b>Azad Jammu and Kashmir</b>	<b>4,311,942</b>			<b>38.50</b>	<b>46.50</b>	<b>95.40</b>	<b>80.80</b>	<b>60.95</b>	<b>32.90</b>	<b>12.54</b>	<b>NA</b>	<b>83.00</b>	<b>32.47</b>

Normal blood pressure	Normal blood sugar	Cervical cancer screening among women 30-49 years (%)	Tobacco non-smoking	Non-Communicable Diseases Score	Hospital beds per 10,000 population	(Physicians* Psychiatrist *Surgeon) density against threshold (%)	Availability of essential medicines in PHC (%)	International Health Regulations core capacity index (%)	Services Access & Capacity Score	UHC Index 2020	Provincial UHC Index Ranking	National UHC Index Ranking	District/ Province/Area
69.00	39.00	NA	59.00	54.15	2.37	17.53	NA	18.68	9.19	25.12	31	133	Torghar
69.00	39.00	NA	59.00	54.15	31.04	27.39	NA	29.19	29.17	38.78	25	102	Upper Dir
69.00	39.00	NA	59.00	54.15	49.17	45.67	NA	48.80	47.85	50.39			Khyber Pakhtunkhwa
69.00	39.00	NA	59.00	54.15	6.37	12.73	NA	13.46	10.30	19.00	31	149	Awaran
69.00	39.00	NA	59.00	54.15	3.01	17.45	NA	18.44	9.89	18.97	32	150	Bolan
69.00	39.00	NA	59.00	54.15	17.57	15.46	NA	16.34	16.43	22.93	24	141	Barkhan
69.00	39.00	NA	59.00	54.15	14.12	19.95	NA	21.09	18.11	22.59	25	142	Chaghi
69.00	39.00	NA	59.00	54.15	30.05	28.04	NA	29.65	29.24	29.31	8	122	Dera Bhugti
69.00	39.00	NA	59.00	54.15	12.62	32.61	NA	34.48	24.21	31.01	7	120	Gwadar
69.00	39.00	NA	59.00	54.15	16.60	13.54	NA	14.32	14.77	21.72	27	145	Harnai
69.00	39.00	NA	59.00	54.15	18.91	25.39	NA	26.85	23.45	35.75	2	110	Jaffarabad
69.00	39.00	NA	59.00	54.15	7.83	13.47	NA	14.24	11.45	25.02	18	135	Jhal Magsi
69.00	39.00	NA	59.00	54.15	17.37	25.39	NA	26.85	22.79	25.64	17	133	Kachhi
69.00	39.00	NA	59.00	54.15	11.19	29.81	NA	31.52	21.91	18.63	33	151	Kalat
69.00	39.00	NA	59.00	54.15	12.47	32.61	NA	34.48	24.11	28.06	10	125	Kech
69.00	39.00	NA	59.00	54.15	31.52	21.35	NA	22.57	24.76	24.31	21	138	Kharan
69.00	39.00	NA	59.00	54.15	14.16	30.33	NA	32.06	23.97	20.24	30	148	Khuzdar
69.00	39.00	NA	59.00	54.15	3.55	17.52	NA	18.52	10.49	24.68	20	137	Killa Abdullah
69.00	39.00	NA	59.00	54.15	10.43	31.06	NA	32.84	22.00	24.96	19	136	Killa Saifullah
69.00	39.00	NA	59.00	54.15	8.11	19.65	NA	20.78	14.91	27.49	11	126	Kohlu
69.00	39.00	NA	59.00	54.15	17.35	30.62	NA	32.38	25.81	32.82	5	117	Lasbela
69.00	39.00	NA	59.00	54.15	11.73	32.46	NA	34.32	23.56	28.23	9	123	Lehri
69.00	39.00	NA	59.00	54.15	30.05	28.04	NA	29.65	29.24	31.14	6	119	Loralai
69.00	39.00	NA	59.00	54.15	8.05	27.09	NA	28.64	18.42	22.03	26	143	Musakhel
69.00	39.00	NA	59.00	54.15	13.43	33.79	NA	35.72	25.31	26.72	12	128	Mustang
69.00	39.00	NA	59.00	54.15	2.05	22.89	NA	24.20	10.43	26.47	14	130	Nasirabad
69.00	39.00	NA	59.00	54.15	21.34	32.46	NA	34.32	28.76	26.52	13	129	Nushki
69.00	39.00	NA	59.00	54.15	19.83	13.84	NA	34.48	21.15	26.40	15	131	Panjgur
69.00	39.00	NA	59.00	54.15	7.93	35.48	NA	37.51	21.94	33.63	4	114	Pishin
69.00	39.00	NA	59.00	54.15	77.13	48.88	NA	51.68	57.97	44.08	1	77	Quetta
69.00	39.00	NA	59.00	54.15	17.36	21.71	NA	22.96	20.53	23.24	23	140	Sherani
69.00	39.00	NA	59.00	54.15	39.41	32.46	NA	34.32	35.28	34.62	3	111	Sibi
69.00	39.00	NA	59.00	54.15	2.05	22.89	NA	24.20	10.43	24.10	22	139	Sohbatpur
69.00	39.00	NA	59.00	54.15	7.06	13.84	NA	14.63	11.27	21.60	29	147	Washuk
69.00	39.00	NA	59.00	54.15	17.36	21.71	NA	22.96	20.53	25.90	16	132	Zhob
69.00	39.00	NA	59.00	54.15	7.52	22.16	NA	23.43	15.74	21.64	28	146	Ziarat
69.00	39.00	NA	59.00	54.15	25.00	31.08	NA	32.70	29.40	35.26			Balochistan
69.00	39.00	NA	59.00	54.15	74.83	44.81	NA	57.10	57.64	52.10	1	17	Bagh
69.00	39.00	NA	59.00	54.15	74.83	44.81	NA	57.10	57.64	50.87	2	22	Bhimber
69.00	39.00	NA	59.00	54.15	74.83	44.81	NA	57.10	57.64	50.40	3	27	Hattian Bala
69.00	39.00	NA	59.00	54.15	74.83	44.81	NA	57.10	57.64	49.60	4	35	Haveli
69.00	39.00	NA	59.00	54.15	74.83	44.81	NA	57.10	57.64	49.22	6	39	Kotli
69.00	39.00	NA	59.00	54.15	74.83	44.81	NA	57.10	57.64	48.80	7	44	Mirpur
69.00	39.00	NA	59.00	54.15	74.83	44.81	NA	57.10	57.64	49.24	5	38	Muzaffarabad
69.00	39.00	NA	59.00	54.15	74.83	44.81	NA	57.10	57.64	48.45	8	48	Neelum
69.00	39.00	NA	59.00	54.15	74.83	44.81	NA	57.10	57.64	47.51	9	57	Poonch
69.00	39.00	NA	59.00	54.15	74.83	44.81	NA	57.10	57.64	47.34	10	59	Sudhoti
69.00	39.00	NA	59.00	54.15	74.83	44.81	NA	57.10	57.64	49.85			Azad Jammu and Kashmir

## UHC Service Coverage Index at District Level (2020)

District/ Province/Area	Population	National UHC Index Ranking	Provincial UHC Index Ranking	FP demand satisfied with modern method (%)	ANC – 4+ visits (%)	Child immunization (Penta 3) (%)	Care-seeking behavior for child pneumonia (%)	RMNCH Score	TB effective treatment (%)	HIV treatment (%)	Insecticide-treated nets for malaria prevention (%)	At least basic sanitation (%)	Infectious Diseases Score
Astore	97,591	87	4	46.40	14.50	69.60	51.40	39.39	62.45	12.54	NA	83.00	40.21
Diamer/Diarel/Tangir	305,069	97	7	46.40	5.20	39.50	46.30	25.77	117.11	12.54	NA	83.00	49.58
Ghanche	178,846	102	9	46.40	11.70	98.30	72.60	44.37	17.21	12.54	NA	83.00	26.16
Ghizer/ Gupis Yasin	254,568	79	2	46.40	68.30	96.00	79.10	70.04	16.55	12.54	NA	83.00	25.83
Gilgit	235,762	60	1	46.40	53.60	79.10	72.30	61.41	65.02	12.54	NA	83.00	40.75
Hunza	74,613	89	5	46.40	92.20	98.10	87.20	77.78	7.71	12.54	NA	83.00	20.02
Kharmang	100,402	94	6	46.40	8.50	95.00	75.20	40.97	37.02	12.54	NA	83.00	33.78
Nagar	74,613	104	10	46.40	30.10	96.90	79.30	57.24	7.51	12.54	NA	83.00	19.85
Shigar	182,492	101	8	46.40	11.00	99.20	69.50	43.31	20.21	12.54	NA	83.00	27.60
Skardu/Roundu	507,856	82	3	46.40	24.80	99.20	56.10	50.30	37.02	12.54	NA	83.00	33.78
<b>Gilgit Baltistan</b>	<b>2,011,813</b>			<b>46.40</b>	<b>34.90</b>	<b>82.20</b>	<b>76.30</b>	<b>56.45</b>	<b>49.66</b>	<b>12.54</b>	<b>NA</b>	<b>83.00</b>	<b>37.25</b>
<b>Islamabad Capital Territory</b>	<b>2,300,366</b>	<b>7</b>	<b>1</b>	<b>55.10</b>	<b>80.20</b>	<b>86.30</b>	<b>83.60</b>	<b>75.14</b>	<b>12.60</b>	<b>12.54</b>	<b>NA</b>	<b>99.00</b>	<b>25.01</b>

### Methodology Used for District level estimation of UHC Service Coverage Index

Methodology used for estimation is on the approach described in the 2017-Global UHC Monitoring Report (World Bank and WHO). The primary data sources used for indicators of service coverage include Pakistan Demographic & Health Survey (PDHS), Pakistan Social & Living Standards Measurement Surveys, Multiple Indicator Cluster Surveys, National and Provincial Bureau of statistics reports, JEE Report 2016, WHO Global Monitoring Reports and administrative data of the Ministry and Departments of Health.

### A. Reproductive, maternal, new-born and child health (RMNCH)/ Age related cluster

**1: Family Planning demand satisfied with modern method (%)**- The data source used for 2015 and 2016 is PDHS 2012-13 and from 2017 to 2020, PDHS 2017-18 is used. The district level information is referenced from the respective provincial Multiple Indicator Cluster Surveys. However, for KP and Balochistan, the data is estimated using human development index as weightage. In case of AJK and GB, PDHS 2017-18 data is replicated at the district level.

**2: Antenatal Care – 4+ visits (%)**- At the National and provincial level, the data is referenced from Pakistan demographic and Health surveys. At the district level, Punjab-MICS 2014 is used for the year 2015 and 2016, and MICS 2017-18 is used from 2017-2020, Sindh-MICS 2014 is used for 2015 to 2019 and MICS 2018-19 for the year 2020. However, Khyber Pakhtunkhwa MICS 2016-17 is used from the years 2015 to 2020. For Balochistan, MICS 2010 is used for 2015-2020. AJK DHS 2010 is used for the year 2015 and 2016. However, for the year 2017-2020, PDHS 2017-18 is used. GB MICS 2016-17 used for all the years (2015-2020)

**3: Child immunization (Penta 3) (%)**- At the National and provincial level, the data is referenced from Pakistan demographic and Health surveys from the years 2015-2019, However, for the year 2020, EPI third Party evaluation survey 2020 is referenced at the national, provincial and the district level. Punjab MICS 2014 is used for the year 2015 and 2016, and MICS 2017-18 for the years 2017 to 2019. Sindh MICS 2014 is used for the years 2015- 2019. For Khyber Pakhtunkhwa, PSLM 2014-15 is used for the year 2015 and MICS 2016-17 is used for the years 2016-2019. For Balochistan, PSLM 2014-2015 is considered from 2015 to 2019. AJK DHS 2010 is used for 2015 & 2016 and PDHS 2017-18 from 2017 to 2019. GB MICS 2016-17 used for the years 2015-2019.

**4: Care-seeking behaviour for child pneumonia (%)**- Pakistan demographic and health survey is referenced at the national and the provincial level for the years 2015-2020. For Punjab, the district level information for the year 2015 and 2016 is calculated based on PDHS 2012-13 provincial information and weightage of district human development index. However, from the years 2017 to 2020, Punjab MICS 2017-18 is used. Sindh MICS 2014 is used for the years 2015-2019. For the year 2020, MICS 2018-19 is referenced. Khyber Pakhtunkhwa MICS 2016-17 is used from the years 2015 to 2020. For Balochistan, MICS 2010 is used as the referenced for 2015-2020. AJK

DHS 2010 is considered in 2015 and 2016 and from 2017 to 2020, PDHS 2017-18 is referenced and data is replicated at the district level. For Gilgit Baltistan, MICS 2016 is used for the years 2015-2020.

Normal blood pressure	Normal blood sugar	Cervical cancer screening among women 30-49 years (%)	Tobacco non-smoking	Non-Communicable Diseases Score	Hospital beds per 10,000 population	(Physicians*Psychiatrist*Surgeon) density against threshold (%)	Availability of essential medicines in PHC (%)	International Health Regulations core capacity index (%)	Services Access & Capacity Score	UHC Index 2020	Provincial UHC Index Ranking	National UHC Index Ranking	District/Province/Area
69.00	39.00	NA	59.00	54.15	36.67	33.28	NA	40.70	36.76	42.14	4	87	Astore
69.00	39.00	NA	59.00	54.15	36.67	33.28	NA	40.70	36.76	39.94	7	97	Diamer/Diarel/Tangir
69.00	39.00	NA	59.00	54.15	36.67	33.28	NA	40.70	36.76	38.99	9	102	Ghanche
69.00	39.00	NA	59.00	54.15	36.67	33.28	NA	40.70	36.76	43.56	2	79	Ghizer/ Gupis Yasin
69.00	39.00	NA	59.00	54.15	36.67	33.28	NA	40.70	36.76	47.24	1	60	Gilgit
69.00	39.00	NA	59.00	54.15	36.67	33.28	NA	40.70	36.76	41.96	5	89	Hunza
69.00	39.00	NA	59.00	54.15	36.67	33.28	NA	40.70	36.76	40.74	6	94	Kharmang
69.00	39.00	NA	59.00	54.15	36.67	33.28	NA	40.70	36.76	38.78	10	104	Nagar
69.00	39.00	NA	59.00	54.15	36.67	33.28	NA	40.70	36.76	39.28	8	101	Shigar
69.00	39.00	NA	59.00	54.15	36.67	33.28	NA	40.70	36.76	42.88	3	82	Skardu/Roundu
69.00	39.00	NA	59.00	54.15	36.67	33.28	NA	40.70	36.76	45.23			Gilgit Baltistan
69.00	39.00	NA	59.00	54.15	161.11	82.70	NA	68.00	96.76	56.02	1	7	Islamabad Capital Territory

## B. INFECTIOUS/ COMMUNICABLE DISEASES (CD)

**1: Tuberculosis effective treatment (%)**- It is calculated by considering two indicators; case detection rate and treatment success rate. The data is referenced from NTP TB (2015-20)

**2: HIV treatment (%)** – The data is provided by National AIDS Control Program, considering estimates of people living with HIV in each province and then taking percentage of ART coverage. For AJK, GB and ICT, we assumed figures as their data is not separately mentioned but included in Punjab

**3: Insecticide-treated nets for malaria prevention (%)**- This indicator is not being used at international level

**4: At least basic sanitation (%)**- The data is taken from PSLM 2014-15 for 2015 to 2017 and PSLM 2018-19 for the years 2018 to 2020. For AJK & GB the data is not available and national figure is used.

## C. NON-COMMUNICABLE DISEASES (NCD)

**1: Prevalence of Normal blood pressure (%)**- used data from WHO UHC Monitoring reports for Pakistan

**2: Normal blood sugar (%)**- used data from WHO UHC Monitoring reports for Pakistan

**3: Cervical cancer screening among women 30-49 years (%)**- This indicator is not being used at international level

**4: Tobacco non-smoking (%)**- used data from WHO UHC Monitoring reports for Pakistan

## D. SERVICES ACCESS AND CAPACITY (SAC)

**1: Hospital beds per 10,000 population against threshold (%)**- For the year 2020, the hospital bed densities are calculated based on the data provided by the provincial/area health departments. The data included both the public and private hospital beds number at the provincial and the district level. For AJK and GB, beds densities are replicated at the district level. However, for the years 2015-2019, the hospital bed densities at the district level are calculated from provincial information using weightage of human development index from the year 2015-2019. For these years, provincial information is referenced from the Statistical Year book, whereas for Areas, reports of the respective Planning and Development department were used. For these years 2015-2019, data is only for public sector and private sector data is not available in all provinces/ areas.

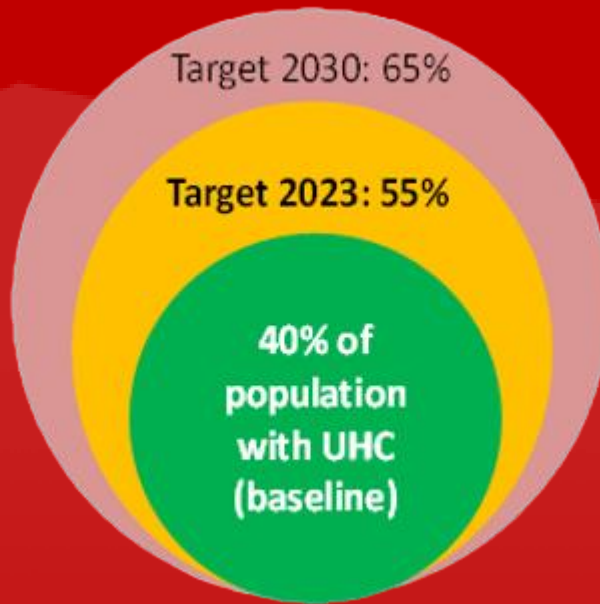
**2: (Physicians\*Psychiatrist\*Surgeon) density against threshold (%)**-Data provided by Pakistan Medical Commission (PMC). For ICT, the densities of human resource were calculated based on ICT health facilities mapping data and subtract it from the Punjab data as ICT data provided by PMC was included in the Punjab data. For GB, PMC provided the figures with AJK, considered the HR percent distribution of 25% and 75% among GB and AJK respectively.

**3: Availability of essential medicines in PHC (%)**- This indicator is not being used at international level

**4: International Health Regulations core capacity index (%)**- the 13 Core capacities from JEE Report of 2016 were used and estimated the district level figures using weightage of HDI



## PAKISTAN: UHC Service Coverage Index Targets



**For more information, please contact:**  
Health Planning, System Strengthening & Information Analysis Unit (HPSIU)  
Ministry of National Health Services, Regulations and Coordination (NHSR&C)

<http://nhsrc.gov.pk>  
<http://phkh.nhsrc.pk>  
<http://nhsrc.pk>

